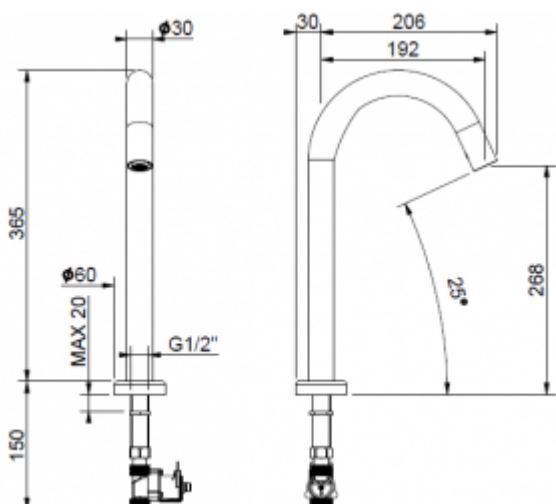




Electronic photocell battery 2517B

- Battery-powered, 4 × 1.5V AA
- Designed for connection to pre-mixed water
- Hygiene flushing function preventing Legionella formation
- Faucet body made of Swedish brass
- Vandal-resistant
- Exceptional durability and reliability
- Entirely manufactured in the European Union
- Easy to operate
- Simple installation
- Certifications

Power	4 x 1,5 AA
Connector	1/2"
Design	Chrome-plated brass
Water time flow	5 sec
Start	Photocell
Water Temperature	5-70°C
Water pressure reduction	up to 2l / min.
Economical	Yes



The electronic washbasin faucet with a G1/2" connection is a modern solution based on touchless operation using a built-in photocell. Equipped with an aerator, it limits water flow to 2 l/min, allowing for economical use. To maintain hygiene, the 2517B faucet is equipped with an Anti-Legionella system, which automatically initiates a cleaning cycle every 24 hours after the last use. The unit is powered by four AA batteries.

The solid brass body, combined with internal anti-scale components featuring an anti-limescale system, protects against limescale buildup and ensures long-lasting reliability. User safety is enhanced by the Anti-Vandal lock, which automatically shuts off the water flow if the sensor is obstructed.

Each deck-mounted faucet from the 2517B series carries a certificate from the Polish Institute of Hygiene, a CE Declaration of Conformity, and a National Declaration of Performance.